

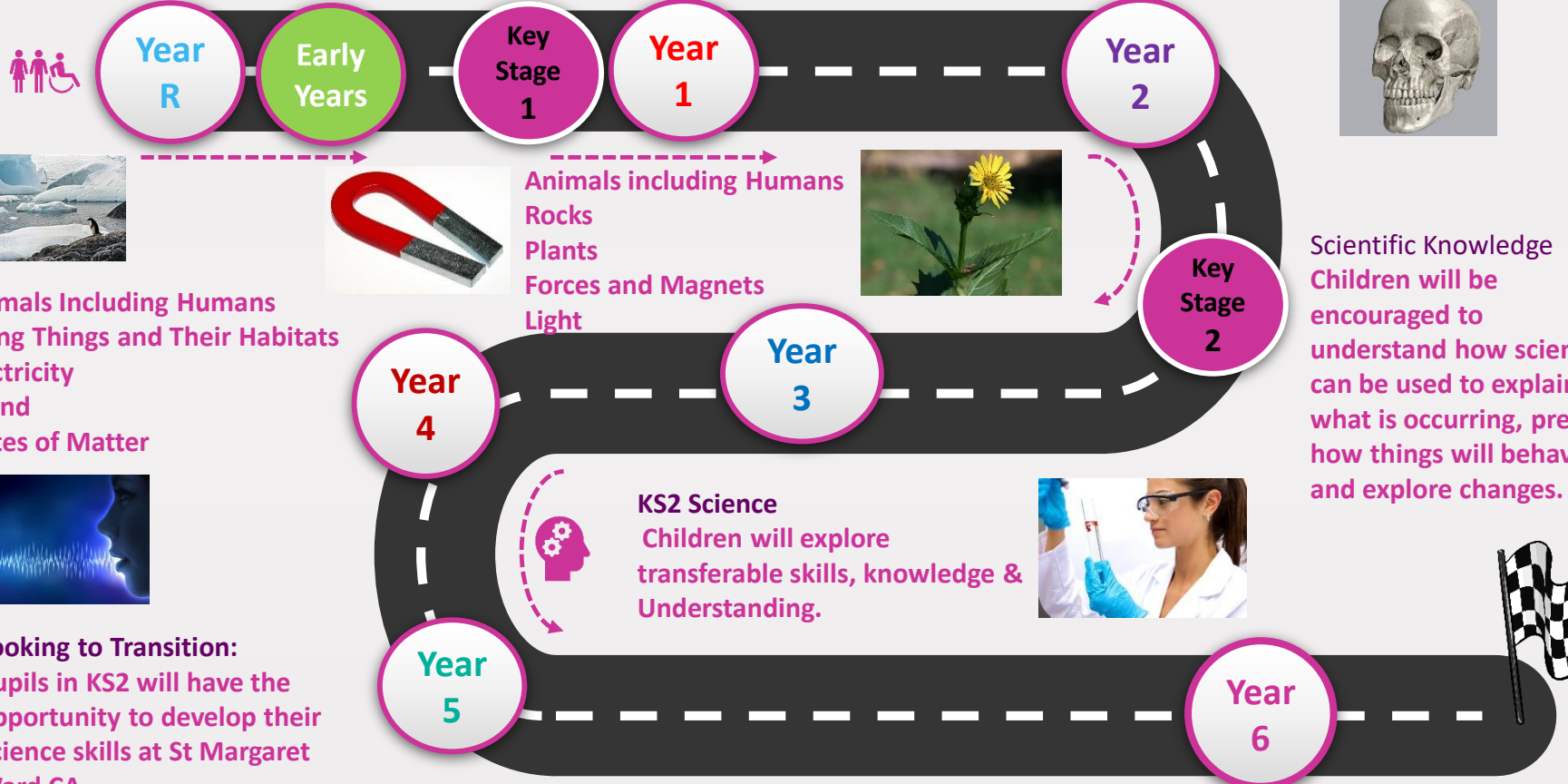
# My Science Learning Journey

**Early years**  
Children are introduced to inquiry based learning about a range of ideas and practices related to the natural world.

Animals including Humans  
Everyday Materials  
Plants  
Seasonal Changes



Changing Materials  
Animals including Humans  
Living Things and their Habitats  
Plants



Animals Including Humans  
Living Things and Their Habitats  
Electricity  
Sound  
States of Matter



**Looking to Transition:**  
Pupils in KS2 will have the opportunity to develop their Science skills at St Margaret Ward CA.



Animals including Humans  
Rocks  
Plants  
Forces and Magnets  
Light



Scientific Knowledge  
Children will be encouraged to understand how science can be used to explain what is occurring, predict how things will behave, and explore changes.



**KS2 Science**  
Children will explore transferable skills, knowledge & Understanding.



Earth and Space  
Properties of Materials  
Forces  
Living Things and their Habitats  
Animals including Humans



Classification.  
Evolution and Inheritance  
Light and Electricity  
Animals including Humans

