




St Wilfrid's Catholic Academy

EYFS prospective parents visit

Welcome

Love one another as
I have loved you.

John the Apostle

 quote fancy

Our Mission and Values

Guided by Gospel Values

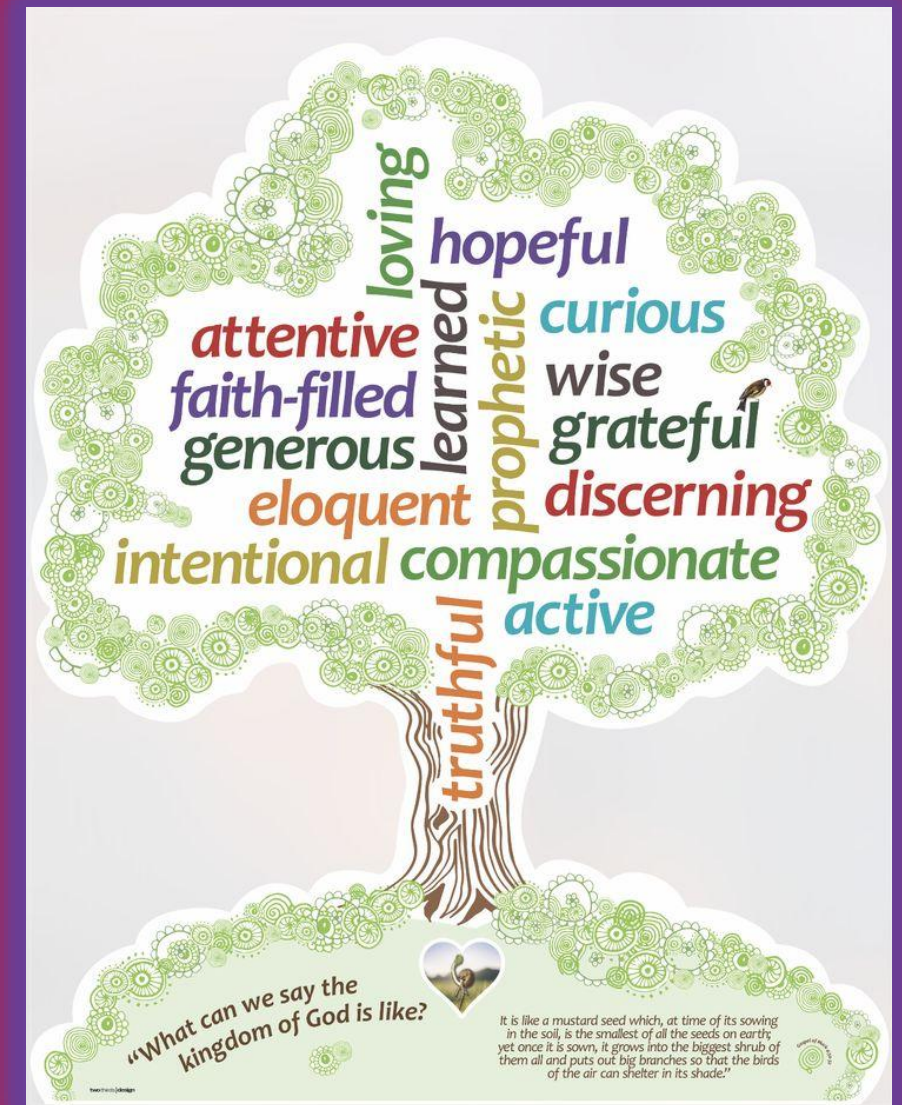
- Our school is guided by Gospel Values. These run throughout everything we do and shape our mission and our daily activities.

Fostering Community

- Students are taught to love, respect, and value themselves and others, creating a caring community.

Character and Faith Development

- Our commitment to faith and character development helps children grow into compassionate, responsible individuals who are ready for the wider world.



A warm and supportive environment

Safe and Nurturing Space

- The school provides a secure, happy environment where every child is valued and nurtured to thrive.

Collaboration with Families

- Dedicated staff work closely with families to support each child's academic and personal growth.

Encouraging Exploration and Talents

- The school encourages children to explore interests and talents, fostering creativity and confidence.

Foundation for Lifelong Learning

- A positive, supportive environment promotes lifelong learning and personal development.



Nursery and Reception Admissions

Age Range and Classes

- Nursery and Reception classes are offered for children aged 3 to 5 years, focusing on early childhood education.

Funding Options

- Nursery funding includes 15 free hours for all families and 30 hours for eligible families to support early learning.

Application Process

- Nursery and Reception admissions are managed through local authority, with school support available via website and office.

Accessible and Inclusive Policies

- The admissions policies are designed to be transparent, supportive, and inclusive for all families applying.



Application dates for 2026

Nursery

Applications open - Monday 1st December 2025

Close - Friday 27th February 2026

Reception

Applications open - Monday 3rd November 2025

Close - Thursday 15th January 2026

Learning Through Play

Learning Through Play

- Play fosters curiosity, problem-solving, and social skills in a supportive and rich environment.

Structured Teaching

- High-quality direct teaching builds foundational literacy, numeracy, and communication skills.

Balanced Curriculum

- Combining play and teaching nurtures emotional wellbeing and prepares children for academic success.



Wraparound Care

Breakfast Club Benefits

- Breakfast Club starts at 7:30am offering healthy meals and engaging activities to support children's early day.

After School Club Features

- After School Club provides creative play, sports, and nutritious snacks until 6:30pm fostering fun and development. We also offer a range of fun and engaging after school clubs throughout the year.

Social Development Support

- Wraparound care enhances children's social skills and provides daily routine continuity for working families.

Enrichment and Outdoor Learning



Working together with families

Family Engagement

- Families actively participate in school events and receive regular updates to stay involved in their child's education.

Home-School Collaboration

- Collaboration between home and school supports children's educational success and wellbeing.

Open Communication

- Communication channels are open and responsive, ensuring parents feel informed and supported.

Community Cohesion

- Working together fosters a nurturing community that promotes every child's growth and success.

Why Choose St Wilfrid's?

- A nurturing Catholic ethos
- High standards of teaching and care
- A vibrant, inclusive community
- Wraparound care for busy families
- A commitment to helping every child reach their full potential

Follow us



Next steps

- Thank you for considering St Wilfrid's Catholic Academy.

For more information, please contact us below.

 Queen's Avenue, Tunstall, ST6 6EE

 01782 235676

 www.stwilfridsnewman.co.uk, office@stwilfridsnewman.co.uk

We look forward to welcoming you and your child into our school family.